

Developer

Shan & Sanghavi Developers LLP
101, SNS Square,
Above State Bank of India,
Vesu Main Road, Surat.

📧 sales@snsproperties.in
📞 Sales Enquiry : +91 89780 26266



BEST WAY TO **SUCCESS**

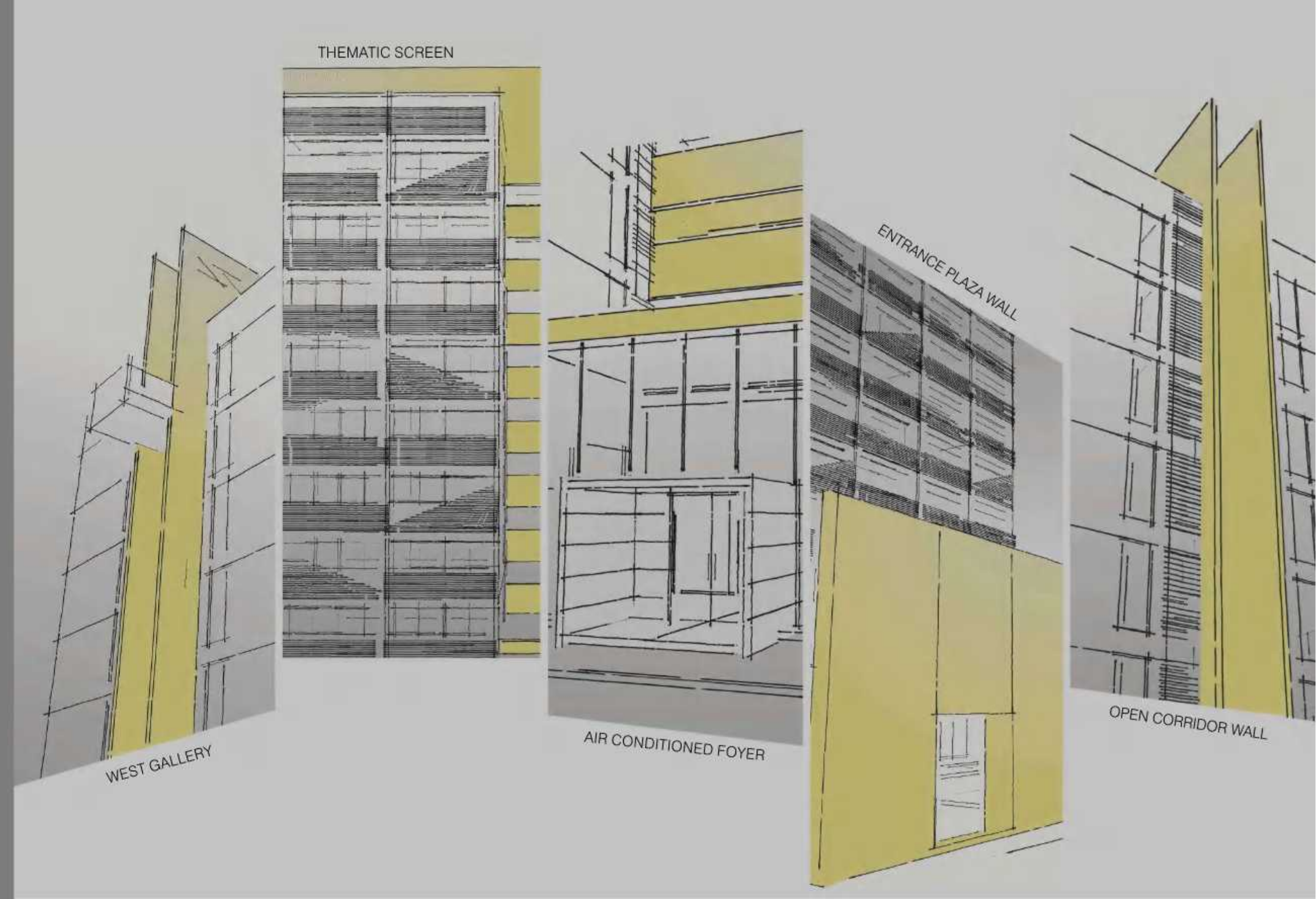
SNS
ARISTA

SHOWROOMS
& OFFICES

A NEW AGE BUSINESS PLACE

Success demands sincere hard work. It demands right strategies. A vision to grow. And a place that's best for business. Here's that place, called SNS Arista. SNS Arista is not just a commercial space, rather it is a new age business place set in modern environs to provide right kind of atmosphere to today's thriving small and medium enterprises.

SNS
ARISTA



WHERE MEETINGS CAN GET INTERESTING

When things get serious within the four walls, the best remedy is to get out in the open. Sometimes taking a break from formal routine can charge up your and your associates' energy. The West Gallery at SNS Arista shall do that wonder of re-energizing people at those boring Monday meetings.



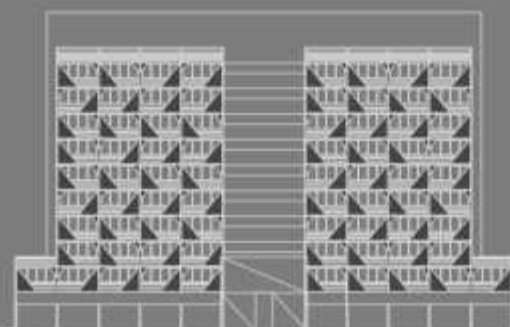
Corporate Office



Showrooms



Stock Exchange



WHERE DESIGN HAS A **THEME**

SNS Arista looks appealing with its thematic screen which demonstrates the edifice as a fine blend of architectural and structural excellence. The showrooms and offices are designed and placed thoughtfully so as to make optimum use of the space while fulfilling the needs of the businesses parked here.



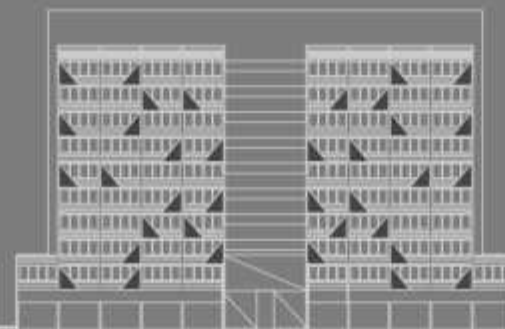
Banking



Advocate



Insurance



WHERE FIRST **IMPRESSION** LEAVES IMPACT

First impression definitely matters when you are expecting someone important at your work place. The address of your business speaks volumes about you as an entrepreneur. SNS Arista welcomes your clients/customers through a well designed, air-conditioned foyer so that visitors feel comfortable and at ease.



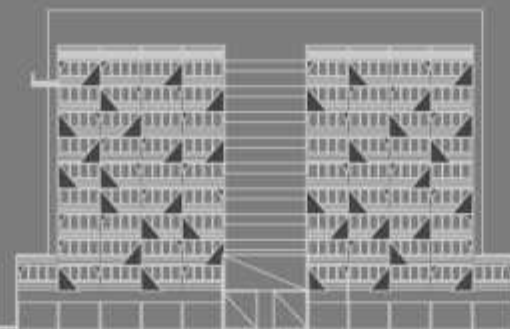
Telecom



Information
Technology



Travels



WHERE **AESTHETICS** ARE SOPHISTICATED

SNS Arista stands elegantly tall with its grand entrance plaza wall in the front that gives the entire premises a distinguished look and persona meeting the aesthetics standards of a corporate building.



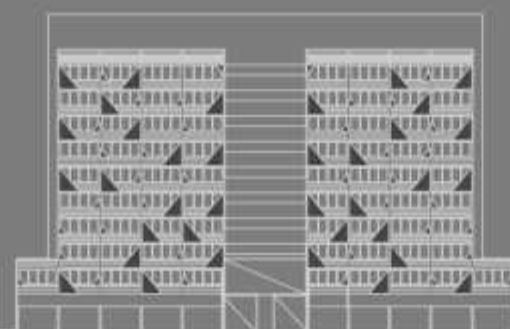
Cafe



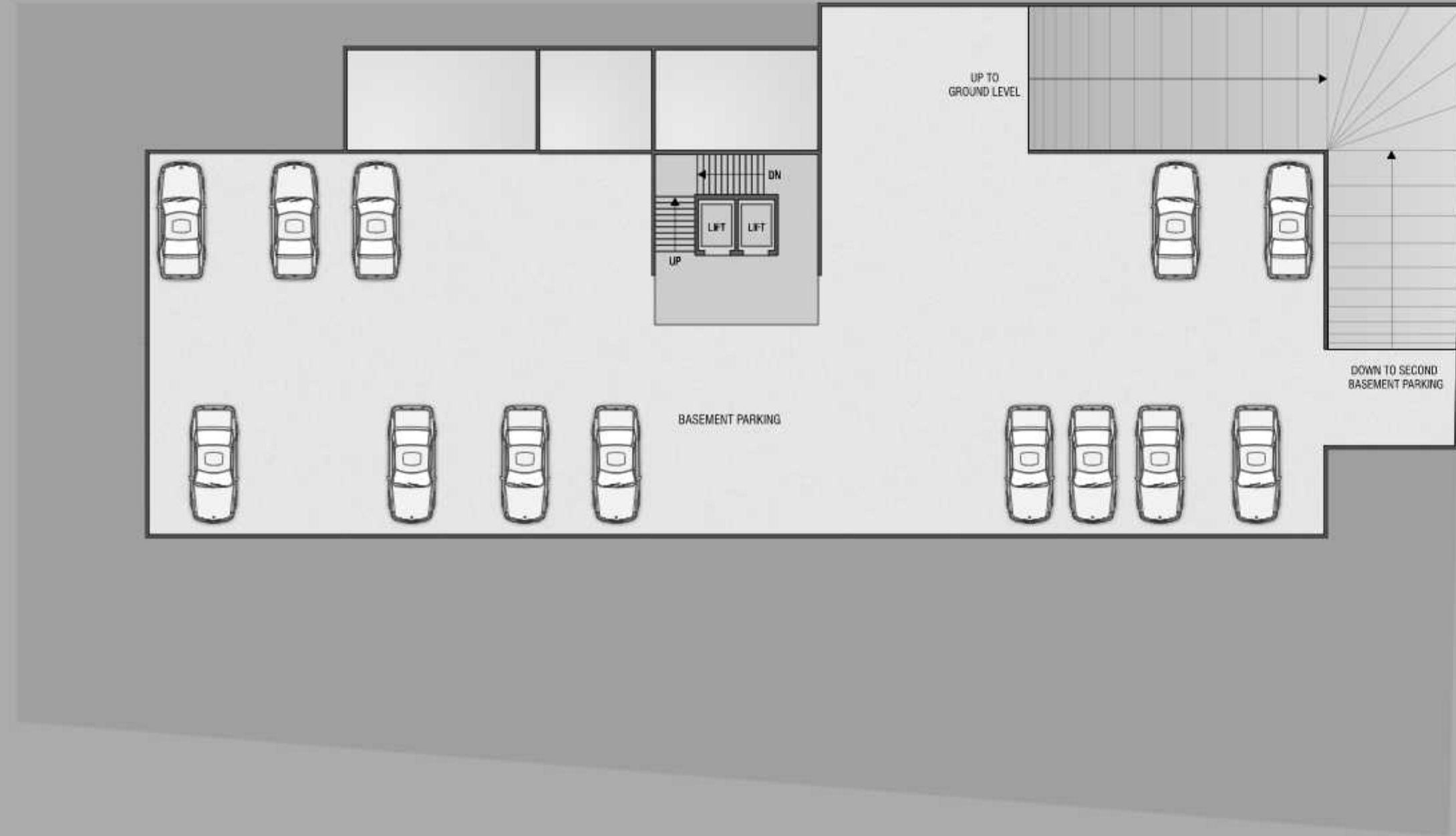
Institute



Call Center



1st & 2nd BASEMENT PLAN

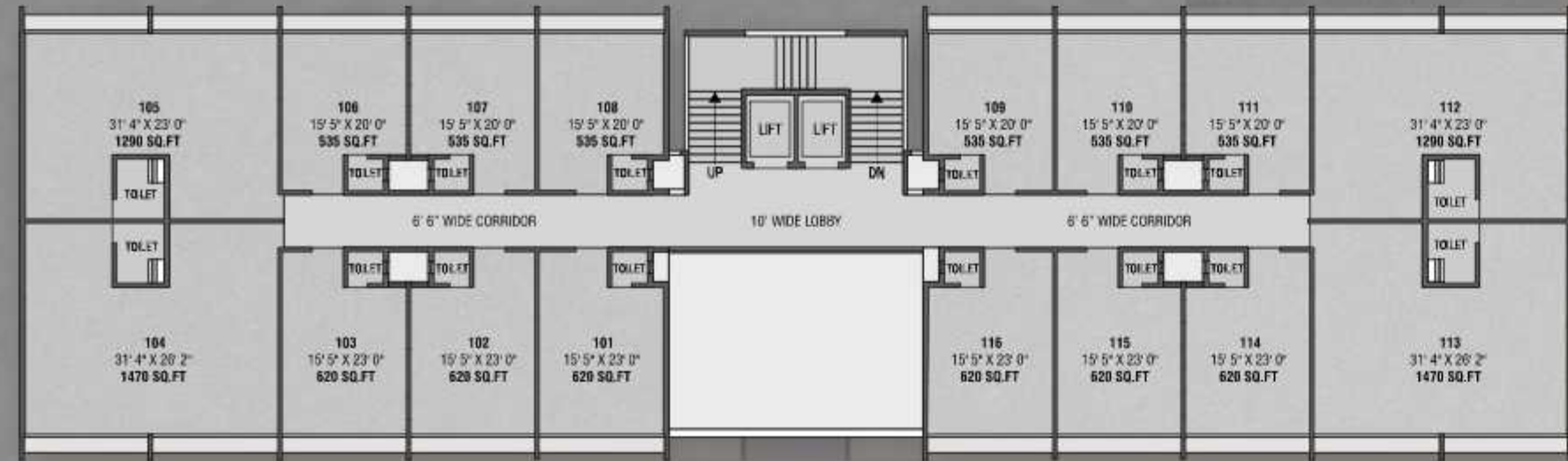


GROUND FLOOR PLAN

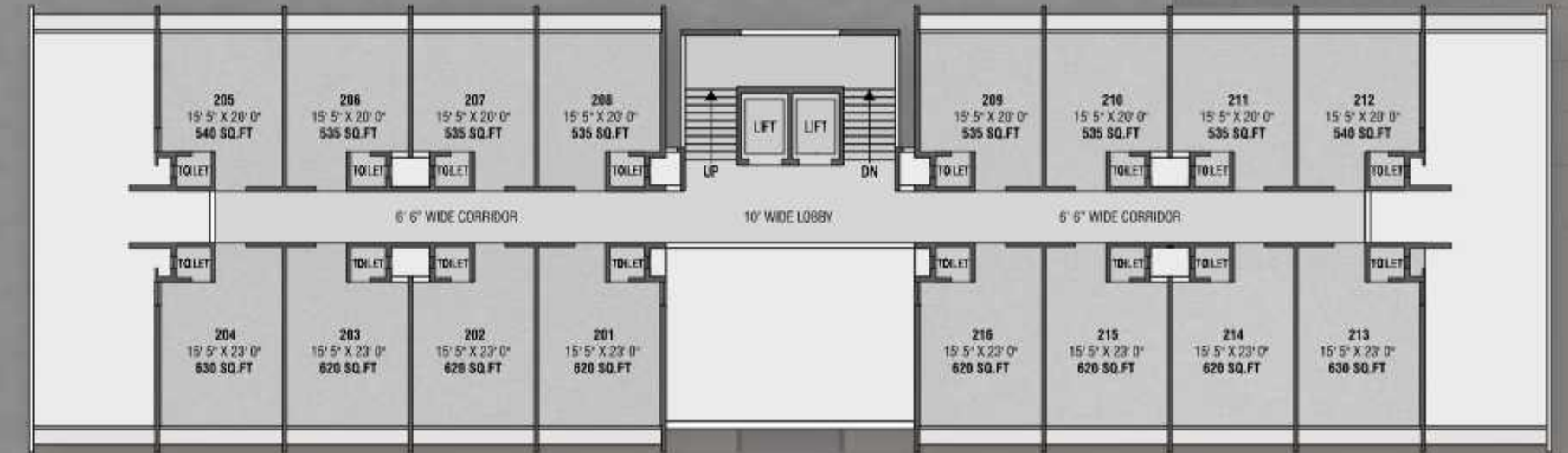


60' WIDE ROAD

1st FLOOR PLAN



2nd to 9th FLOOR PLAN





VIBRANT. INSPIRING. FUTURISTIC.





SPECIFICATIONS

EXTERNAL FACADE

- Combination of Aluminum / Glass windows, Aluminum louvers for Sun Protection.
- Premium quality crushed stone plaster on all external surfaces.
- All Shops with double height glass-aluminum frame.

INTERNAL AREAS

- Foyer, Lift lobby, Sky cafeteria, sky lounge flooring and wall cladding with marble / vitrified tiles / granite. Ceilings in gypsum finished with premium quality acrylic paint.
- Corridor floor and walls clad with premium quality vitrified tiles, ceilings in gypsum finished with premium quality acrylic paint.
- Offices/shops flooring in mirror finished vitrified tiles, walls finished with emulsion paint. Window jambs in granite, aluminum anodized sliding windows. All doors laminated both sides.
- Two level basement exclusively for parking purpose with sign age system for smooth vehicular movement.

ELECTRICAL AND MECHANICAL PROVISIONS

- Individual distribution board, concealed copper wiring, ceiling mounted fluorescent lighting in all shops and offices.
- Wall mounted florescent tubes, high speed internet, cable television, radio antenna in all offices and shops.
- Full capacity stand-by generator to supply power to entire complex in event of power failure.
- Dedicated meter room.
- Split air-conditioning system in each office with adequate provision for outdoor unit.
- Foyer, sky lounge air-conditioned.
- High speed automatic lift.
- Fire fighting sprinkler system in all common areas of the building including corridors on all floors.

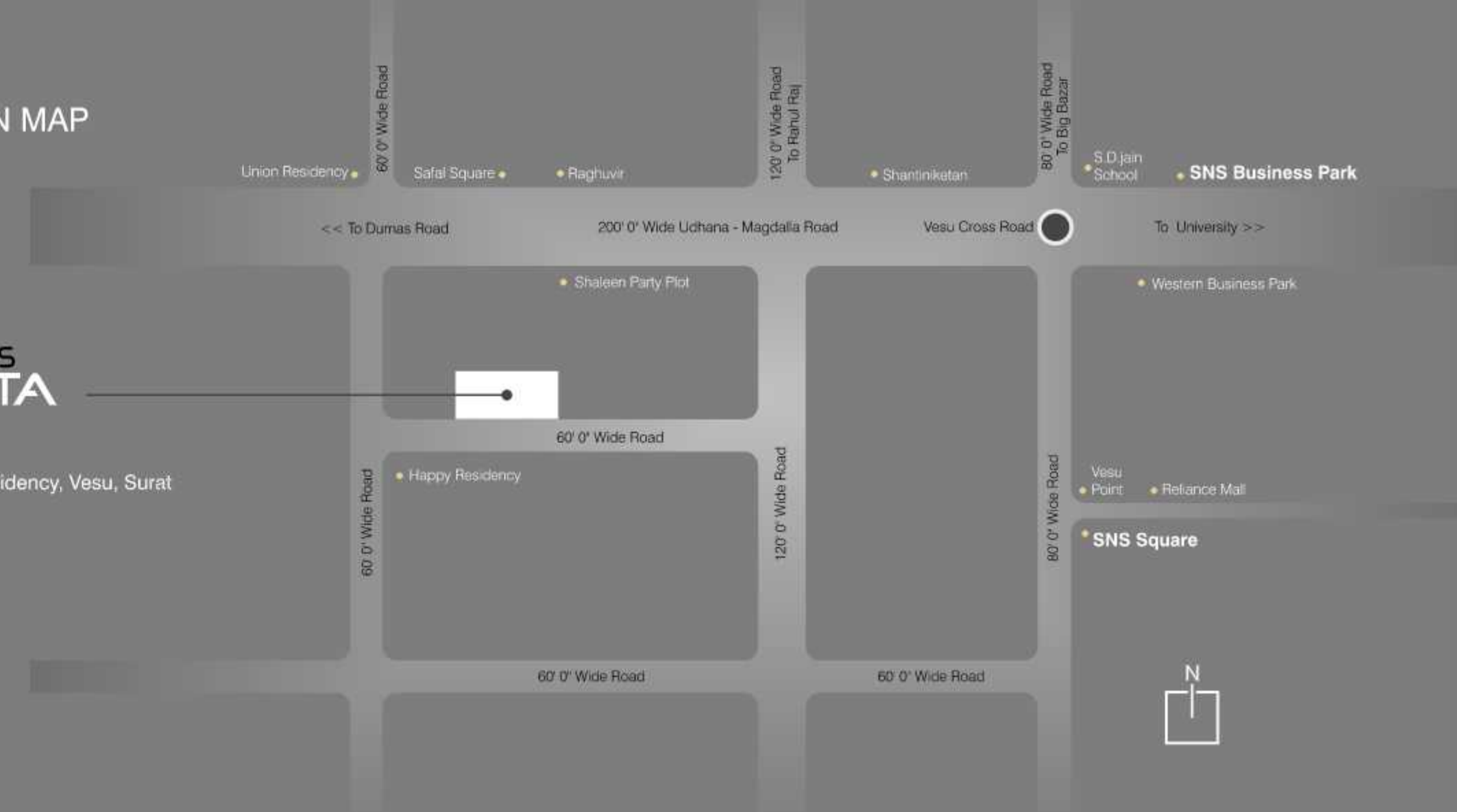
TERRACE GARDEN

- common terrace equipped with sky cafeteria for in house refreshments, sky lounge (3 Nos.) for informal meetings suitable for about 10 persons, riot to mention breathtaking city view and the ambience.

LOCATION MAP

SNS ARISTA

Site Address :
Opp. Happy Residency, Vesu, Surat



Architect
Design Module
Ahmedabad

Landscape Architect
Dhaval Makhmalwala
Ahmedabad

Structure Consultant
Sarjan Consultant
Ahmadabad.

Utility Consultant
Vraj Sanitation
Baroda

Electrical Consultant
Excellent energy Consultant
Surat

DISCLAIMER

• Dimensions are shown for indication, subject to change. • all right reserved by developer to amend in plan, elevations or any details as may be required. • Anything shown in this brochure are indicative and cannot be a part of agreement. • Internal changes shall not be permitted on elevation wall, grill, external color and in common spaces. • Furniture and fixtures shown in layout plan area for indication purpose only. • Legal charges, stamp duties, registration fees torrent, water, drainage and society maintenance etc. will be charge separately. • If any changes in rules & regulation at SMC or government will be bound to all the members.

Member
CREDAI
SURAT