



[www.snsproperties.in](http://www.snsproperties.in)



SNS  
AXIS  
BUSINESS SPACE



## A BUILDING THAT **BUILDS IMAGE**

The potential to leave a lasting impression lies at the center of building a business image that is commensurate with your brand and clientele. SNS Axis Business Spaces is that center of image building for your business in the diamond city Surat.



## IN THE HEART OF THE CITY

SNS Axis is an exquisite edifice with extraordinary space development meant to meet the high standards of the businesses that will be parked here. It is strategically based in the exceptional location of Nanpura which serves as the center of the city providing close proximity to all important utilities.



Airport - 10 km.



Surat Railway Station - 7 km.



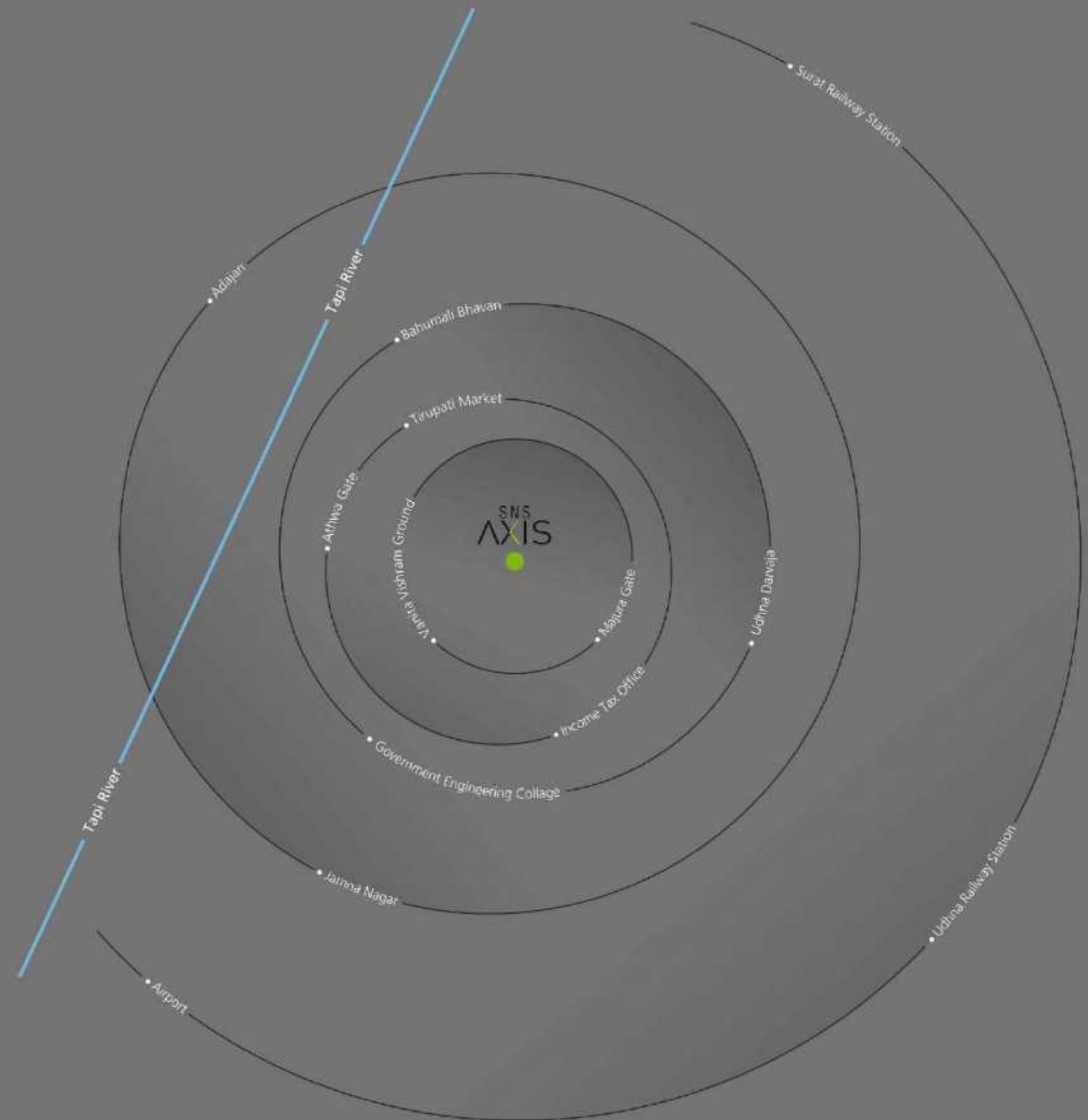
Textile Market - 4 km.



Government Offices - 1 km.



College - 1 km.



SNS  
AXIS  
BUSINESS SPACE

RADICALLY DISTINCT  
OFFICE BUILDING  
IN SURAT

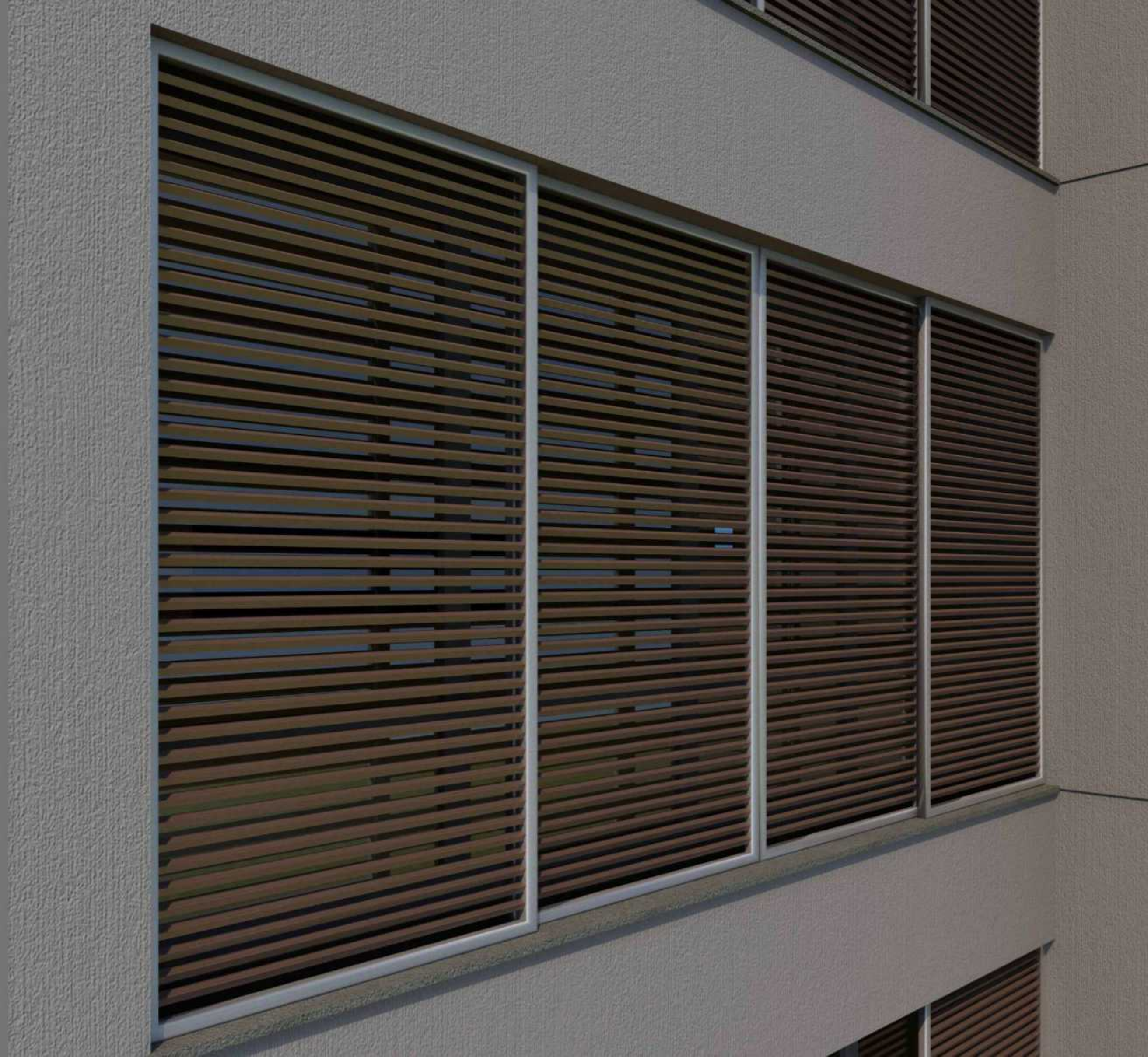
BASEMENT + GROUND + 5 FLOOR



---

## IT'S LITERALLY FIRST OF ITS KIND

SNS Axis, for the first time in Surat, brings the concept of Solar Control System for superior energy efficiency in response to the rising concern for energy crisis in today's age of global warming. The energy-efficient solar system window shutters are incorporated to serve dual purpose by controlling solar heat coming into the office.





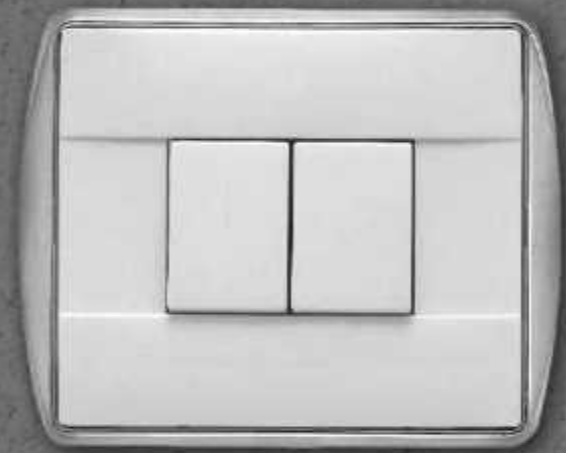
---

A **WONDERFUL,**  
**SOPHISTICATED**  
AND CLASS APART  
ADDRESS FOR  
THOSE WHO  
**THINK AHEAD**

---

FIRST IN SURAT  
TO OFFER  
**POWER SAVINGS**

Because of the solar control system, the loss of sun heat is prevented during winters which enhances day-lighting with the use of natural light. On the other hand, it minimizes heat during summers and keeps it naturally cool inside. Consequently it decreases the energy consumption and results in enormous power saving, thus contributing its bit toward wellness of the environment.



---

FULLY LOADED WITH  
**IN-BUILT FACILITIES**

Besides offering first class amenities to meet the demands of the professionals who will be working here, the offices and showrooms at SNS Axis come centrally air-conditioned to provide better experience for the clients and the people.



MEETING  
DEMANDS OF  
THE CORPORATE  
WORLD WITH  
**LUXURY AMENITIES**  
AND **BEAUTIFUL**  
**AESTHETICS**





THINK HIGH.  
THINK BEYOND.  
**CHOOSE SNS AXIS.**

## Specification

### External Facade

- Combination of Aluminum / Glass Windows & Adjustable Outdoor Sliding Shutter Louvers to achieve optimum sun shading and unobstructed views for functional sun protection and maximum aesthetic impact.

### Walls

#### Lobby / Passages

- Lift Lobbies / Common area - Quality polished granite/ vitrified tiles cladding, plastered wall with emulsion paint finish.

#### Saleable/ Tenanted Area

- Offices - Cement - sand plastered wall pop with emulsion paint finish.
- Doors & Windows with granite jambs and both side laminated door shutter.

### Ceilings

#### Lift Lobbies

- Specially designed POP Ceiling, monolithic finish with emulsion paint/ Aluminum clip on ceiling

### Flooring

- Quality Polished vitrified tiles flooring for saleable/Tenanted Area
- Quality polished granite / Vitrified tiles flooring for lift lobbies and common area.

### Mechanical & Electrical Services

#### Electrical Provisions

- Cooper Wiring, individual distribution board ceiling mounted fluorescent lighting in the premises.
- Full capacity stand-by generator to supply power to the whole complex in event of power failure.
- Split Air-conditioning system in each office

#### Plumbing

- Concealed Pipe line internally and standard bathroom fittings.

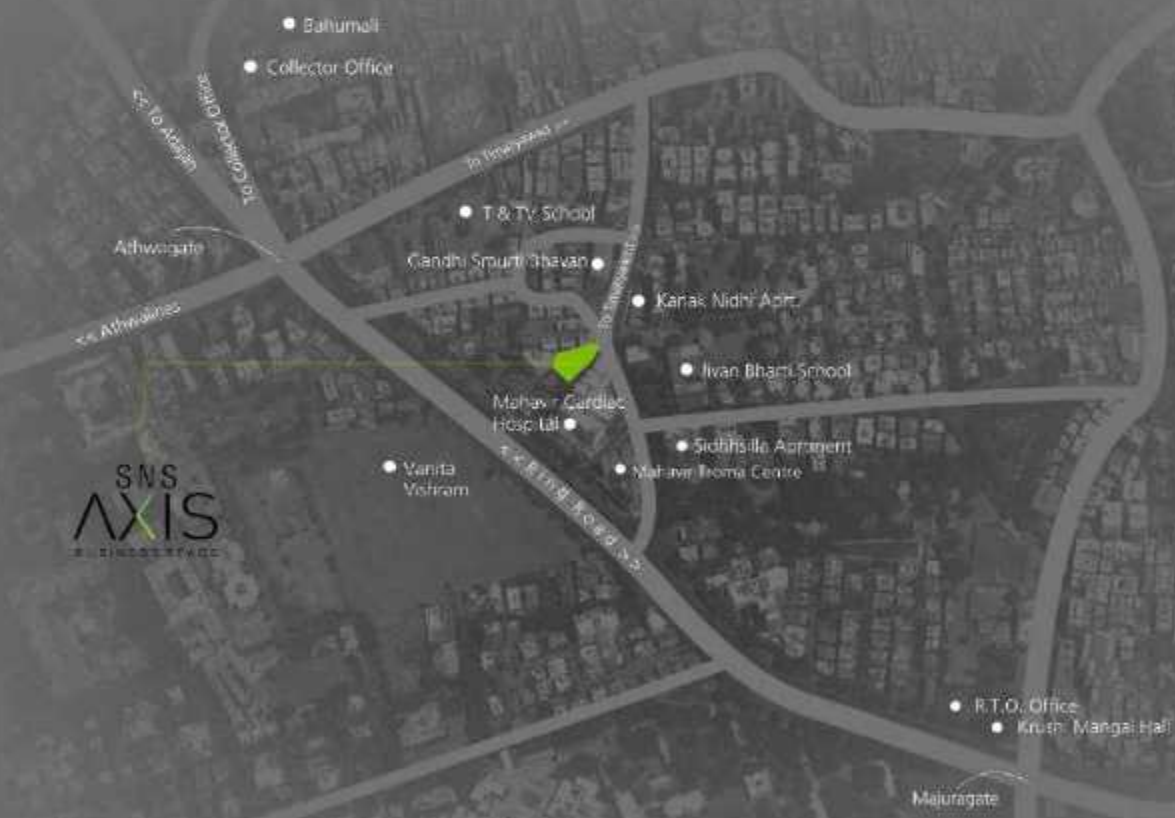
#### Lift Installations

- Building is served by Automatic IIT.

#### Telephones / Telecommunications System

- Telecommunication riser and telecom cabling are provided to all tenanted premises
- Centralized television & radio antennae, cable television connection points available on all floors.

## Key Plan



### Disclaimer:

• Dimensions are shown for indication, subject to change. • All right reserved by Developer to amend in plan, Elevations or any Details as may be required. • Anything shown in this Brochure are indicative and cannot be a part of agreement. • Internal changes shall not be permitted on elevation wall, grill, external color and in common spaces. • Furniture and fixtures shown in layout plan are for indication purpose only. • Legal charges, stamp duties, registration fees, Torrens, water, drainage and society maintenance etc. will be charge separately. • If any changes in rules & regulation of SMC or Government will be bound to all the members.

SNS  
AXIS  
BUSINESS SPACE

Opp. Jivan Bharti School,  
Nr. Mahavir Hospital, Nanpura, Surat.

SNS  
BUILDING FUTURE

Developer  
Shah & Sanghavi Developers LLP,  
101, SNS Square, Above State Bank of India,  
Vesu Main Road, Surat.

Civil Project Consultant  
Bharat M. Patel  
Surat

Utility Consultant  
Vraj Sanitation  
Baroda

Legal  
Hitesh Laiwala  
Surat