

lines UV

envelope

SNS | MARINA



lines UV

If there is magic on this planet, it is contained in water...



bring the magic of the sea into your home

unveiling ...

SNS | **MARINA**
sea view apartments

SNS | MARINA
sea view apartments

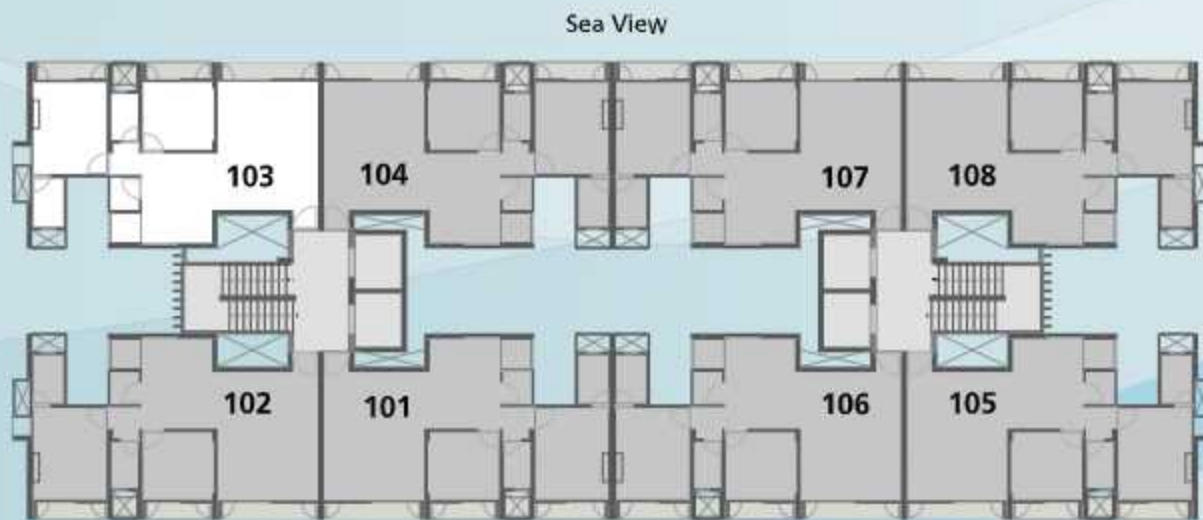
redefining apartment spaces | 2 BHK stylish apartments



SNS | MARINA
sea view apartments







Sea View

Road View



TYPICAL UNIT PLAN

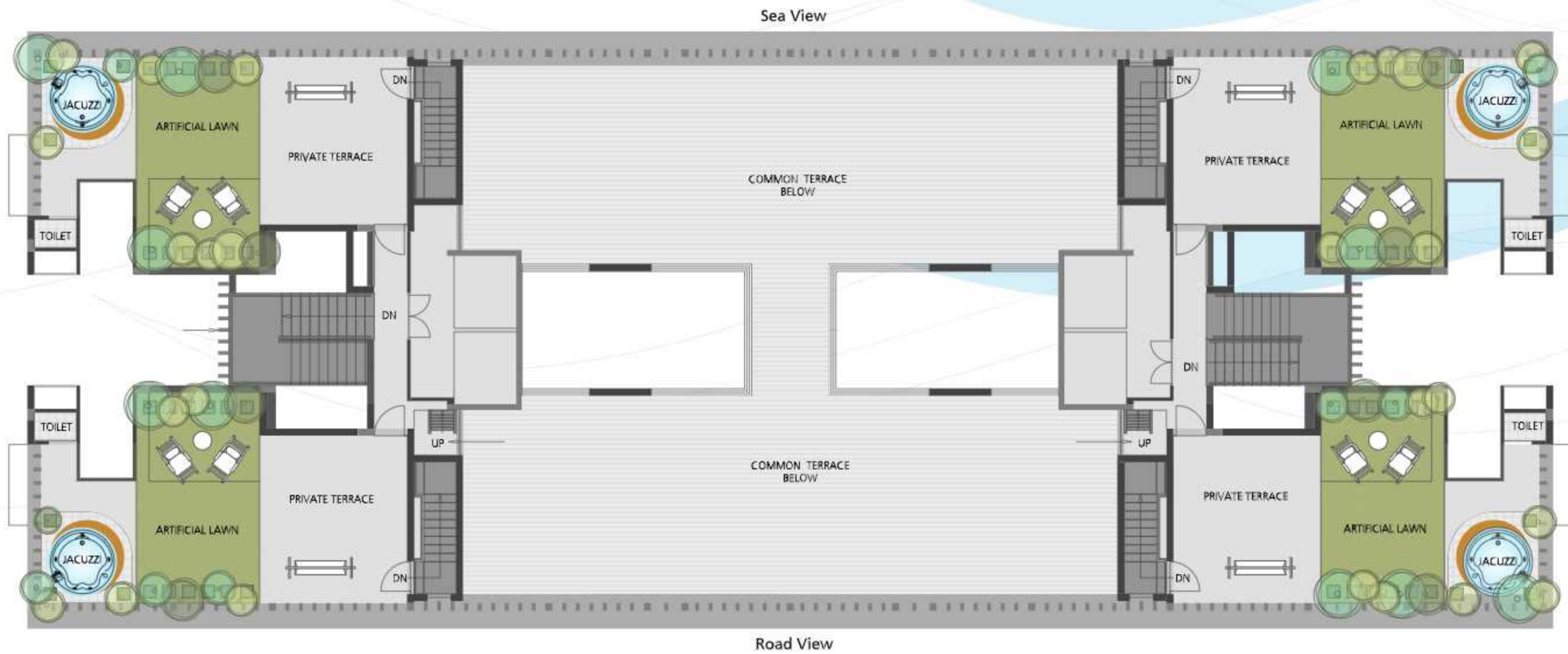
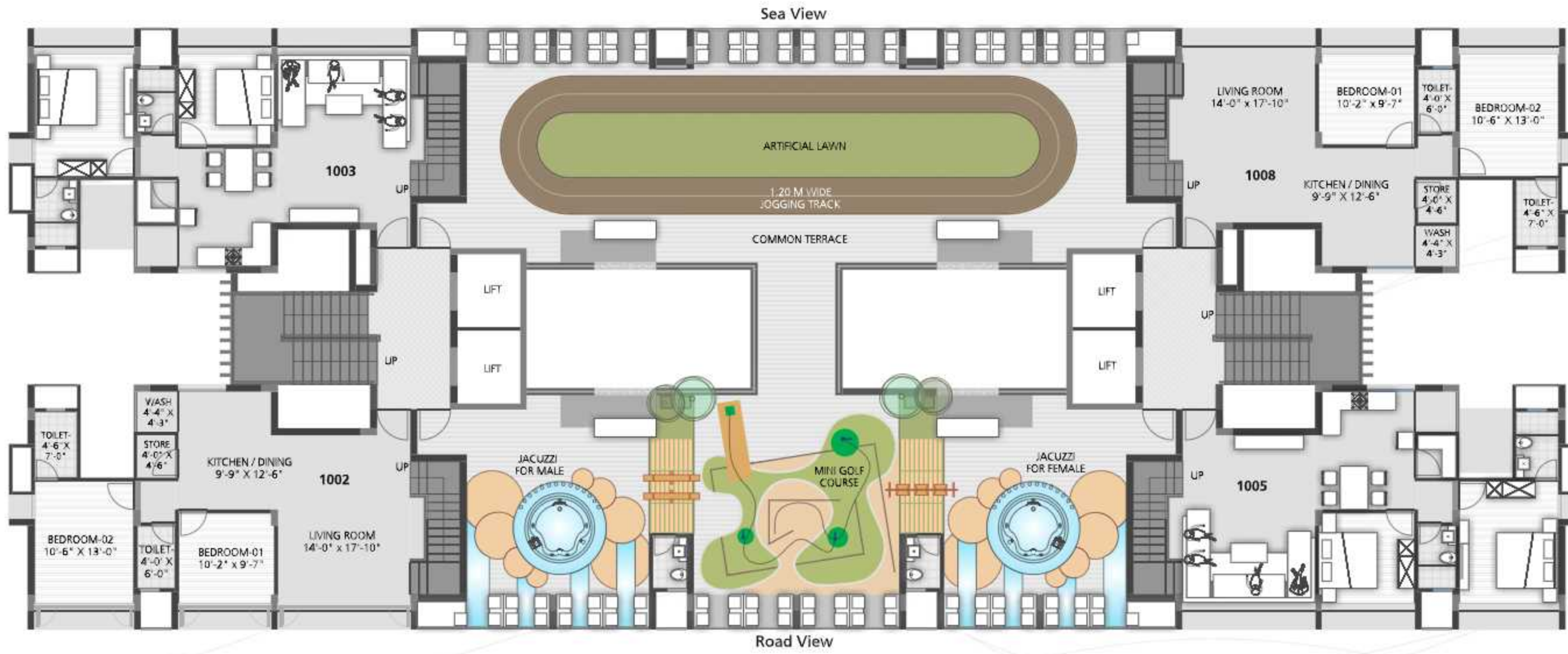
Super Builtup Area 1375 Sq. Ft.



SNS | MARINA
sea view apartments

bring the magic of the sea into your home







SILENT FEATURES

- Jogging track, jacuzzi and mini golf coarse at terrace area
- Power back up generator for elevators, water pumps and common amenities & single face power back up in inch flat for lighting.
- Indoors game area like table tennis ,pool table, chess, carrom & attractive entrance gate and decorative front compound wall.
- Separate children play area and sitting for elders.
- Ample space for car parking at ground level
- Automatic elevator with digital display of floor number
- Earthquake resistant R. C. C. Frame structure.
- Fire safety provision as per standards.
- Well managed professional system to keep building and entire complex clean with round the clock full proof security.
- Intercom facilities for each flat and common area.

SPECIFICATIONS

- **Flooring** : granamite tile flooring in all rooms for elegance durable and clean floor surface.
- **Kitchen/store** : granite top kitchen platform with s.s. Sink. Kota stone shelves in store room.
- **Doors** : decorative entrance main door with wood frame and laminated flush door in all rooms.
- **Window** : aluminum window frame with glass shutter in full height. With glass railing.
- **Toilet/plumbing** : granamite tile dado up to lintel level in all toilet and over kitchen platform, jaquar or equivalent plumbing and sanitary fixtures of standard quality
- **Paint** : lapi primer finish for inside walls and acrylic water proof colour for exterior walls.
- **Electrification** : concealed electric wiring. Provision of telephone, internet point in living room and bed rooms.
- **Air condition** : split air conditioning in drawing room, dining, bed rooms.

Please Note

- Dimensions are shown for indication, subject to change
- All right reserved by Developer to amend in plan, Elevations or any Details as may be required.
- Anything shown in this brocher are indicative and cannot be apart of agreement.
- Internal changes shall not be permitted on elevation wall, grill, external color and in common spaces.
- Furniture and Fixtures shown in layout plan are for indication purpose only.
- Legal charges, stamp duties, registration fees G.E.B., water, drainage and society maintenance etc. Will be charged separately.
- If any changes in rules & regulation at SUDA or Government will be bound to all the members.

KEY PLAN

SEA





Developer
Synergy Developer

101, SNS Square, Above State Bank Of India, Vesu Char Rasta, Surat - 395007.
Tele-Fax - 0261 2215315 | Website - www.snsproperties.in

Architect



Civil Project Consultant
Bharat Patel

Utility Consultant
Vraj Sanitation, Baroda.